

Bagela blow-in system Microflow

Spare parts and Accessories



Blow-in system Microflow

Microflow is used for blowing in small fibre optic cable 1- 4 mm. With Microflow cable blowing is fully automated - Push a button and Microflow is taking care of the job. The continuously variable operation speed and the maximum speed are preselectable. A micro sensor supervises the linear course of the fibre optic. A lateral swivel out due to the rising friction or obstacles will cause an immediate stop.

Order No. 111.350.00



Spare parts

Adaption set

This is a complete set of format parts consisting of nylon fibre guide, wheels, top blowing junction block, bottom blowing junction block, fibre cable sensor arm and o-ring for wheels. The Adaption sets are available in different sizes and must be used according to the actual size of fibre cable and micro duct. Please specify the size of the fibre cable and micro duct.

Order No.	Item	Cable Size	duct-Ø
111.352.00	complete Set A	1.0 - 1.7 mm	5mm
111.353.00	complete Set B	1.8 - 2.6 mm	7mm
111.354.00	complete Set C	2.7 - 3.6 mm	10mm
111.355.00	complete Set D	3.7 - 4.2 mm	10mm



Applicator

The applicator leads the cable into the Microflow. It is available in different sizes according to the actual size of the fiber cable.

Order No.	Item	Cable Size
111.362.00	type A	1.0 - 1.7 mm
111.363.00	type B	1.8 - 2.6 mm
111.364.00	type C	2.7 - 3.6 mm
111.365.00	type D	3.7 - 4.2 mm



Specifications are subject without notice. Output details are depending on use conditions.



Wheel

These wheels pull the cable into the Microflow. Microflow is equipped with two of them. The wheel is available in different sizes according to the size of the cable.

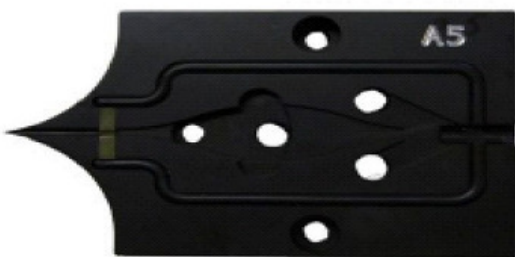
Order No.	Item	Cable Size
111.366.00	Wheel A	1.0 - 1.7 mm
111.367.00	Wheel B	1.8 - 2.6 mm
111.368.00	Wheel C	2.7 - 3.6 mm
111.369.00	Wheel D	3.7 - 4.2 mm



Top blowing junction block

The blowing junction block consists of two parts (top/bottom). Both parts must be adapted to the actual size of the fibre optic cable and the duct. Please specify the sizes and we will advise the correct size of the blowing junction unit.

Order No.	Item	Cable Size
111.370.00	Top Adapter A	1.0 - 1.7 mm
111.371.00	Top Adapter B	1.8 - 2.6 mm
111.372.00	Top Adapter C	2.7 - 3.6 mm
111.374.00	Top Adapter D	3.7 - 4.2 mm



Bottom blowing junction block

The blowing junction block consists of two parts (top/bottom). Both parts must be adapted to the actual size of the fibre optic cable and the duct. Please specify the sizes and we will advise the correct size of the blowing junction unit.

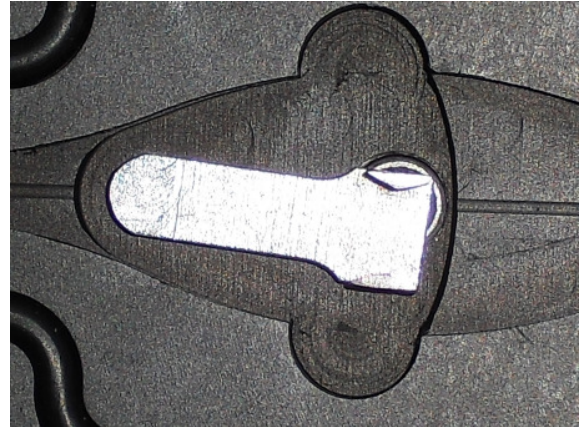
Order No.	Item	Cable Size
111.376.00	Bottom Adapter A	1.0 - 1.7 mm
111.377.00	Bottom Adapter B	1.8 - 2.6 mm
111.378.00	Bottom Adapter C	2.7 - 3.6 mm
111.379.00	Bottom Adapter D	3.7 - 4.2 mm

Specifications are subject without notice. Output details are depending on use conditions.

Fibre cable sensor arm

The fibre cable sensor arm is Microflow`s unique protection technology. It stops the cable blowing machine as soon as the cable gets bent inside the blowing junction block and the cable cannot get damaged. The sensor arm is available in different sizes according to the actual size of the fibre cable.

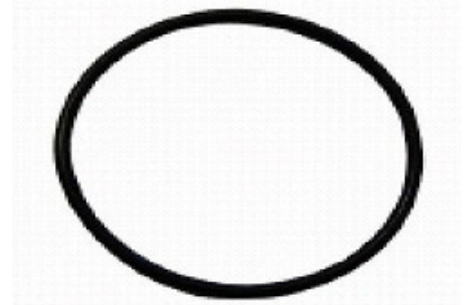
Order No.	Item	Cable Size
111.380.00	Sensor Arm A	1.0 - 1.7 mm
111.381.00	Sensor Arm B	1.8 - 2.6 mm
111.382.00	Sensor Arm C	2.7 - 3.6 mm
111.383.00	Sensor Arm D	3.7 - 4.2 mm



O-ring for Wheel

It is available in different sizes according to the size of the wheel/cable..

Order No.	Item	Cable Size
111.385.00	O-Ring for wheel A	1.0 - 1.7 mm
111.386.00	O-Ring for wheel B	1.8 - 2.6 mm
111.387.00	O-Ring for wheel C	2.7 - 3.6 mm
111.388.00	O-Ring for wheel D	3.7 - 4.2 mm



Lubricant Bagela lube B 50

This lubricant is characterized by excellent slipping quality. It is urgently recommended for the application with Miniflow and Microflow

Order No. 111.340.00



Specifications are subject without notice. Output details are depending on use conditions.